

DESIGN PORTFOLIO

School of Architecture Fellowship Application
University of Minnesota | Masters Program | Graduate II

JENNA (PITTMAN) JOHANSSON

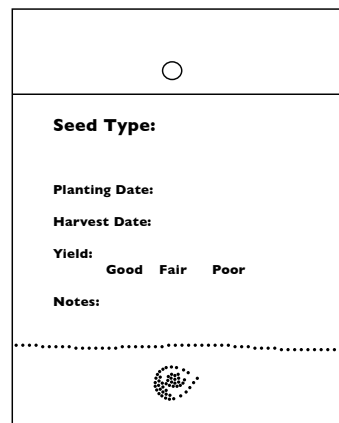
CATALYST 2012

Systems Catalyst Workshop

The Systems Catalyst Workshop was a week long course in graphic design and its use in architecture. It was co-instructed by John Comazzi and guest instructor, Hilary Dana Williams, Assistant Professor of Graphic Design at Drake University, Des Moines, IA.

Teams thought about the Minneapolis Depot as a farmer's market location and designed a graphic system that would work to inform people about the market through identity design, informational design, and environmental graphics.

Jessica Andrejasich and I focused on the idea of growth. Instead of intervening on the site solely with a farmer's market, we proposed to pair the market with a community garden. This approach allows the community to take control of the growth and production of their own food by becoming the "community vendor" of the market - showing and teaching those new to gardening the steps involved in successful crop growth.



Recipe: Roasted Tomato Basil Soup
 Time: 1 hr 30 min Yield: Serves 6 Level: Easy


Ingredients

- 3 Pounds ripe plum tomatoes
- 1/4 Cup plus 2 tablespoons good olive oil
- 1 Tablespoon kosher salt
- 1 1/2 Teaspoons freshly ground black pepper
- 2 Cups chopped yellow onions
- 6 Garlic cloves, minced
- 2 Tablespoons unsalted butter
- 1/4 Teaspoon crushed red pepper flakes
- 1 (28th) canned plum tomatoes
- 4 Cups fresh basil leaves, packed
- 1 Teaspoon fresh thyme leaves
- 1 Quart chicken stock or water

Directions

Preheat the oven to 400 degrees F. Toss together the tomatoes, 1/4 cup olive oil, salt, and pepper. Spread the tomatoes in 1 layer on a baking sheet and roast for 45 minutes.

In an 8-quart stockpot over medium heat, saute the onions and garlic with 2 tablespoons of olive oil, the butter, and red pepper flakes for 10 minutes, until the onions start to brown. Add the canned tomatoes, basil, thyme, and chicken stock. Add the oven-roasted tomatoes, including the liquid on the baking sheet. Bring to a boil and simmer uncovered for 40 minutes. Pass through a food mill fitted with the coarsest blade. Taste for seasonings. Serve hot or cold.



Garden Tips: Tomatoes

Seedlings + Planting

When starting tomatoes from seed, give the seedlings room to branch out. Close conditions inhibit their growth, so transplant them as soon as they get their first true leaves and move them into 4" pots about 2 weeks after that.

Tomato seedlings will need either strong, direct sunlight or 14-18 hours under grow lights. Place the young plants only a couple of inches from florescent grow lights. Plant your tomatoes outside in the sunniest part of your vegetable plot.

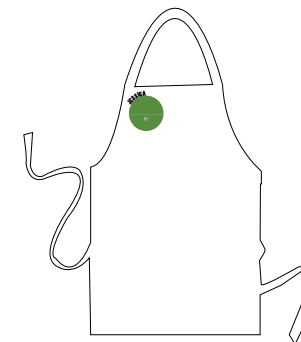
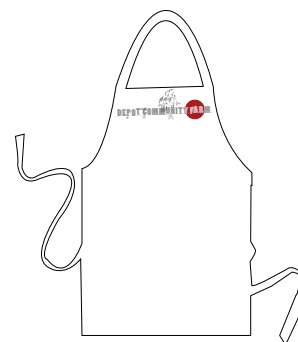
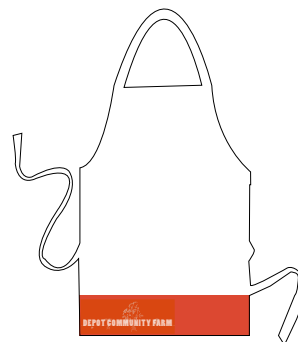
Care + Maintenance

When starting tomatoes from seed, give the seedlings room to branch out. Close conditions inhibit their growth, so transplant them as soon as they get their first true leaves and move them into 4" pots about 2 weeks after that.

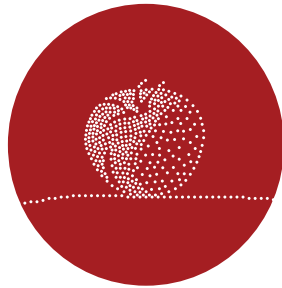
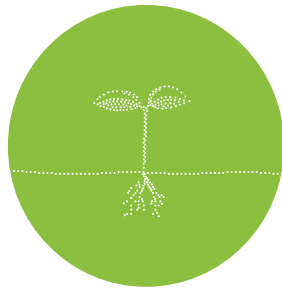
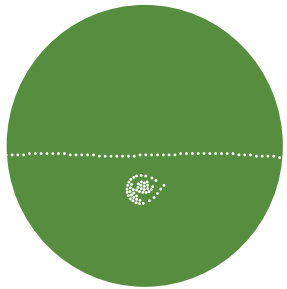
Tomato seedlings will need either strong, direct sunlight or 14-18 hours under grow lights. Place the young plants only a couple of inches from florescent grow lights. Plant your tomatoes outside in the sunniest part of your vegetable plot.

Saving Seeds

The fruits can be collected as they ripen and stored in a refrigerator until you have several to process as once. Just prior to extracting the seed, allow the fruit to sit at room temperature until they all are ripe



Informational Graphics: seed packets, recipe cards, vegetable stat sheets
 Environmental Graphics: aprons that depict role of garden worker (i.e., general, specialist)



Identity Graphics: "Depot Community Farm" logo
Environmental Graphics: ceiling integrated dot icons showing learning stations, large sign on facade

SPR 2011 MODULE

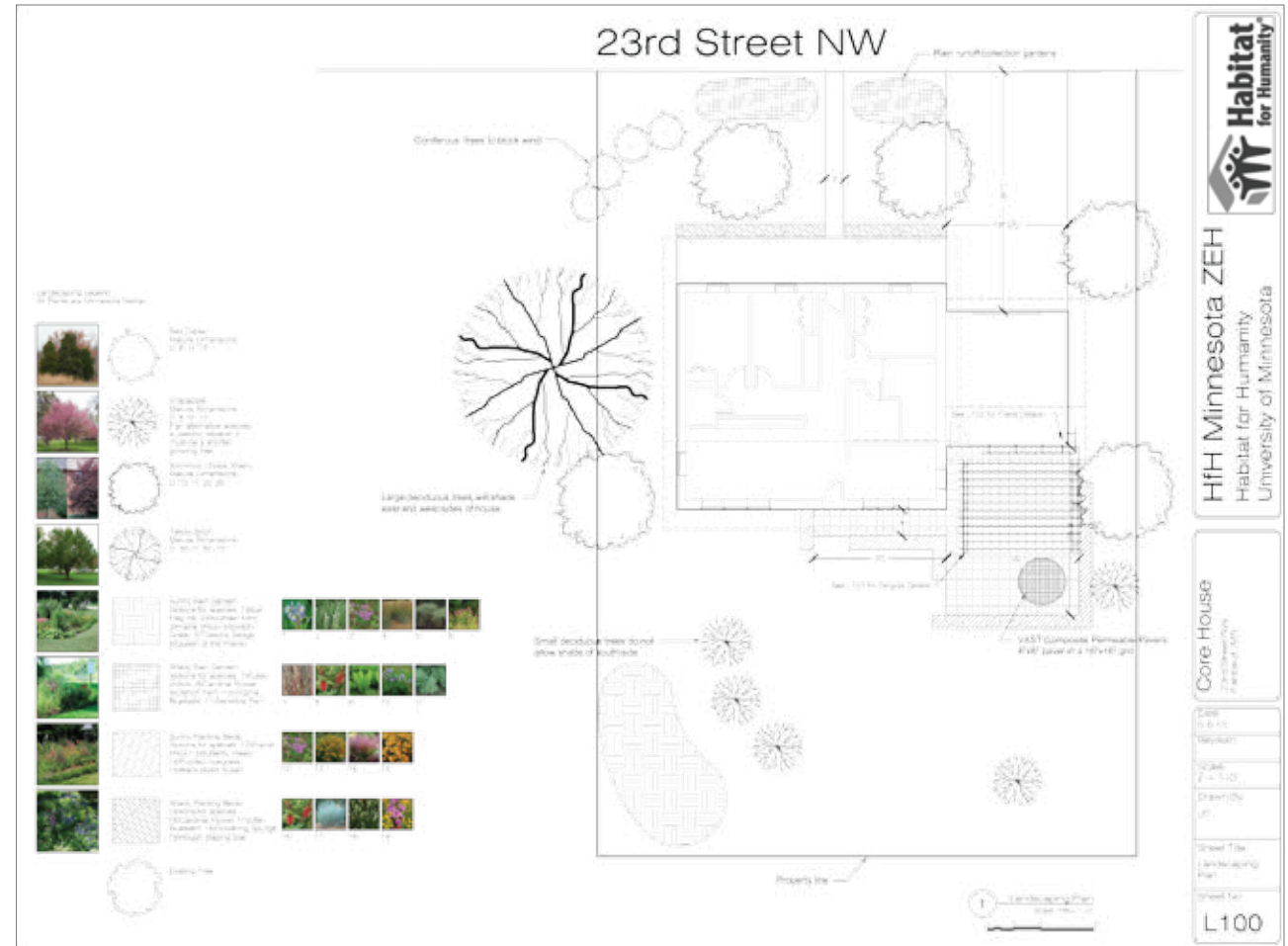
Habitat for Humanity Design

The HfH module was co-instructed by Lucas Alm and Dan Handeen. They led the class in the design of two single family homes to be built by volunteers through the HfH organization. The homes were intended to be NetZero energy use.

As a class of fourteen students we worked very closely to design and create two construction document sets. The "Princeton Prefab" was built the following summer - I was able to participate in the construction.

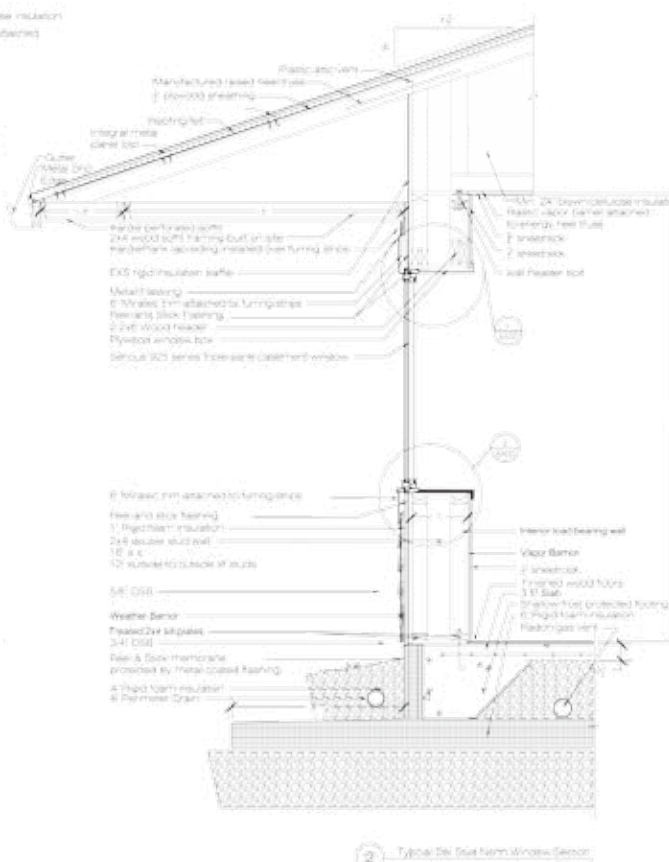
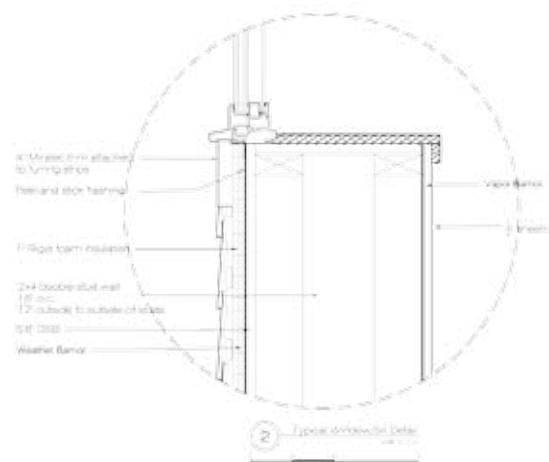
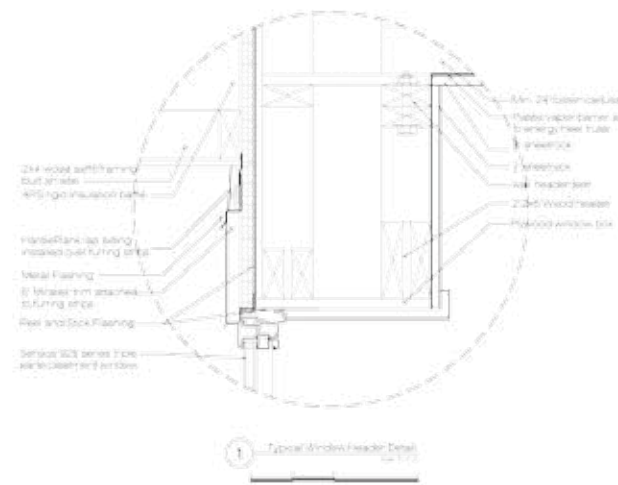
The "Core House" was developed for broader use by HfH. It included various orientations dependent on the site, and two different framing systems - ICF and Double Stud.

Drawings shown illustrate the areas in which I was most involved. I also took a leadership role in the use of the Passive House Planning Package in order to perform energy modeling on each scenario of both houses.



Landscaping plan for "Core House" at Faribault location
Below: "Core House" design; north & west elevations





Habitat for Humanity
HfH Minnesota ZEH
 Habitat for Humanity
 University of Minnesota

Core House
 2001 Greenway
 Faribault, MN

Date: 9/5/17
 Project: 17-1147
 Drawn By: JL
 Sheet Title: Double Stud Window Sect
 Sheet No: A302



Double stud wall details and wall construction
 Below: "Princeton Prefab" design; construction photos; completed house



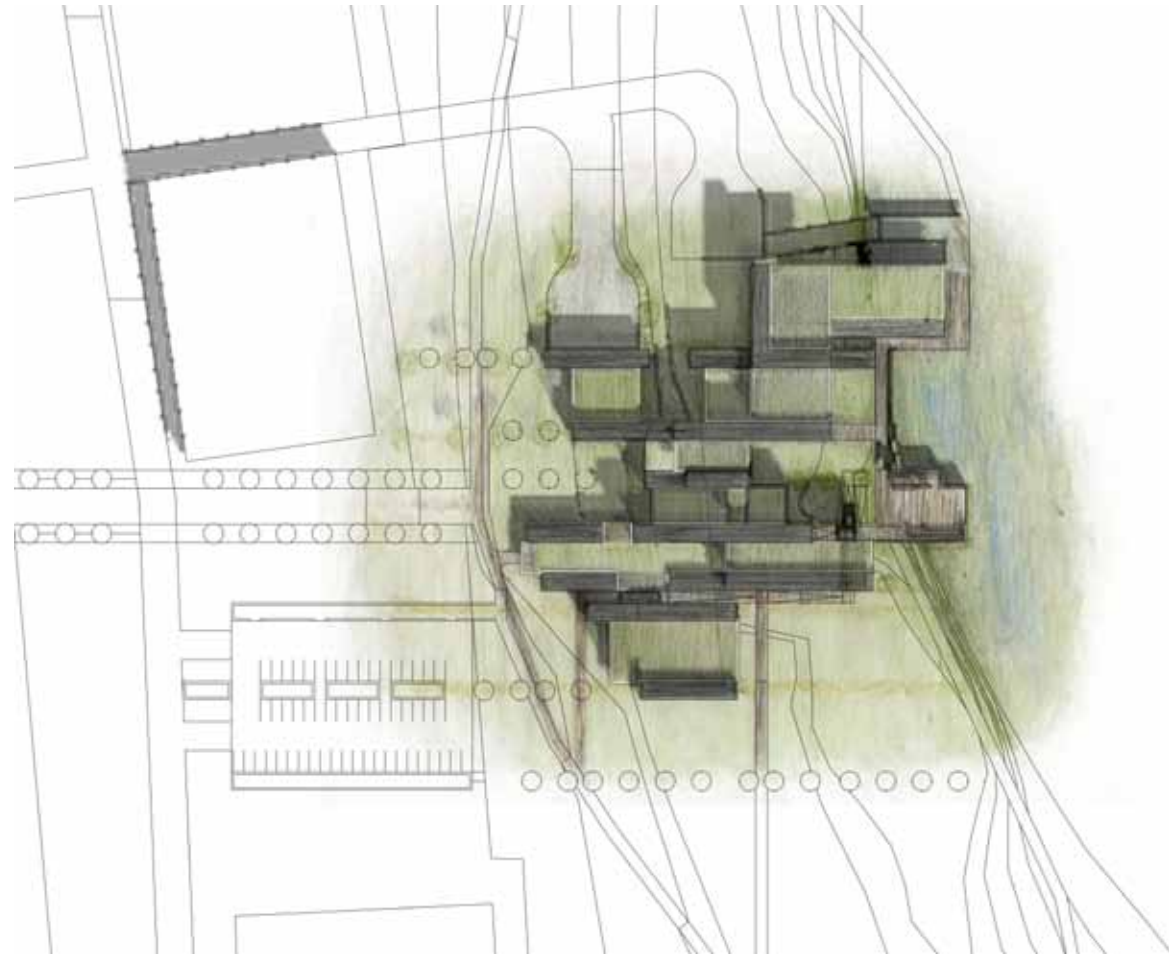
DESIGN STUDIO

FALL SEMESTER 2011

Riparian Wetland Research & Learning Center Proposal

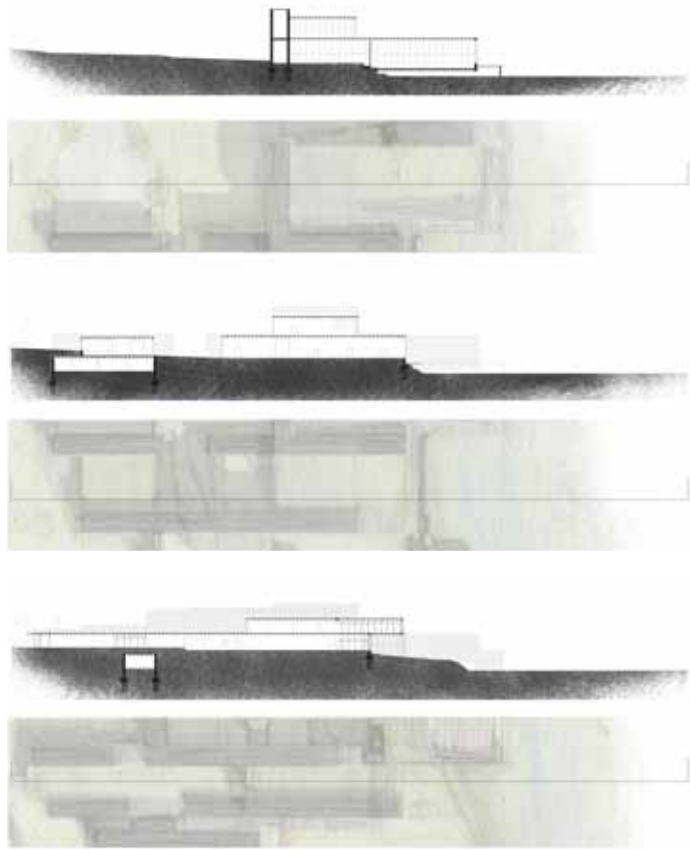
This design studio, instructed by Jeffrey Mandyck, looked at design strategies to respond to a portion of the RiverFIRST proposal from Tom Leader Studio and Kennedy & Violich Architecture. The proposal illustrated a restoration of wetlands to a site north of Lowry Avenue on the Mississippi River in North Minneapolis.

My proposal for the Riparian Wetland Research & Learning Center plays with the relationship between solid and void - solid spaces being places of service and void spaces for program to be situated. The push and pull of the spaces of void between the repeating solid bars create dynamic views of the wetlands and building as well as exterior courtyard areas giving the building a campus feel. The lowering of elevation from south to north brings people closer to the wetlands - the closest interaction taking place in the laboratories.



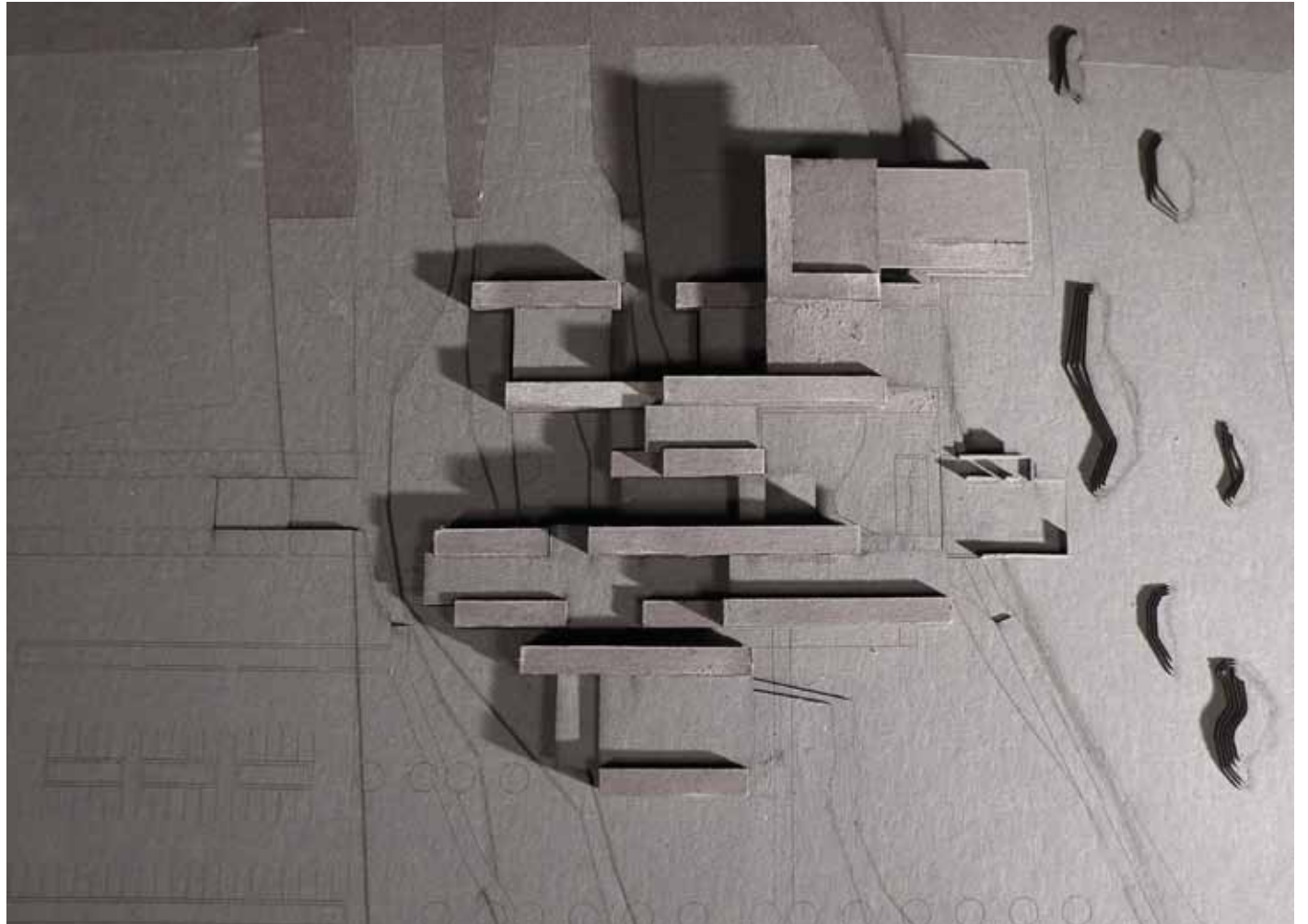
Site Plan and East Elevation



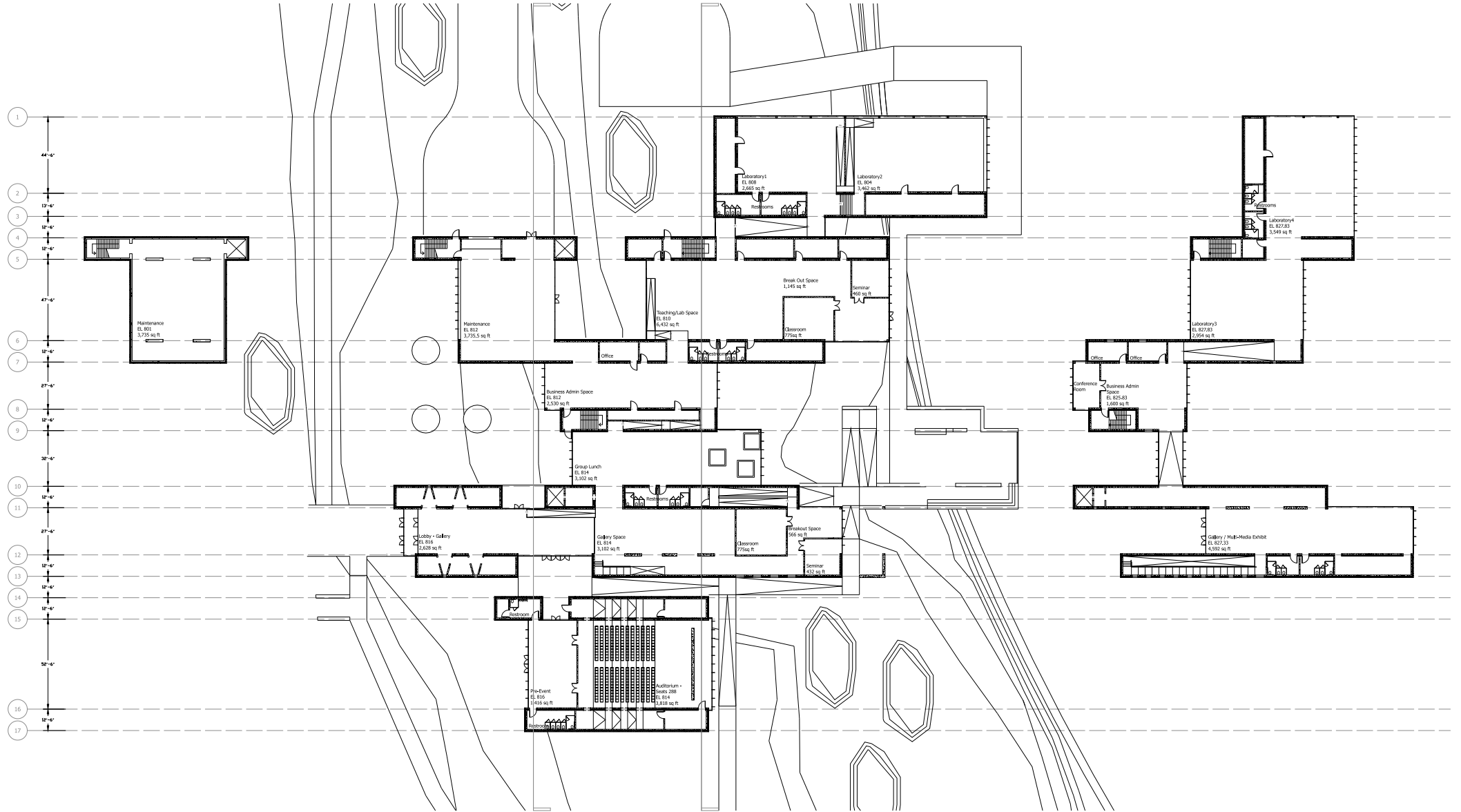


Left: sections/plan sections; Above: view from south
Below from left: view from event space, view in service corridor, rooftop view





Chipboard site model



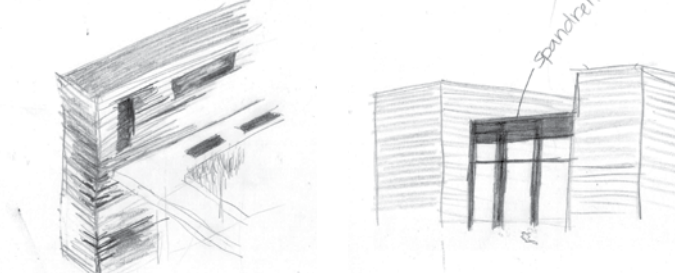
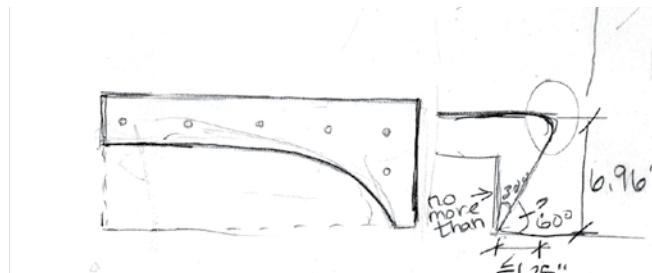
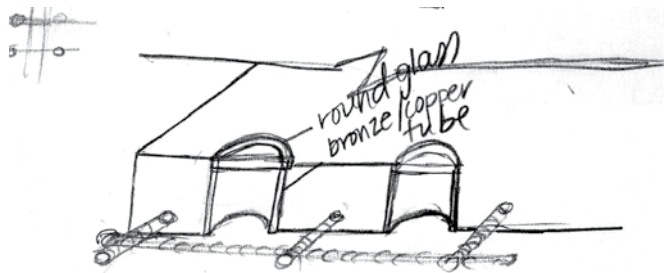
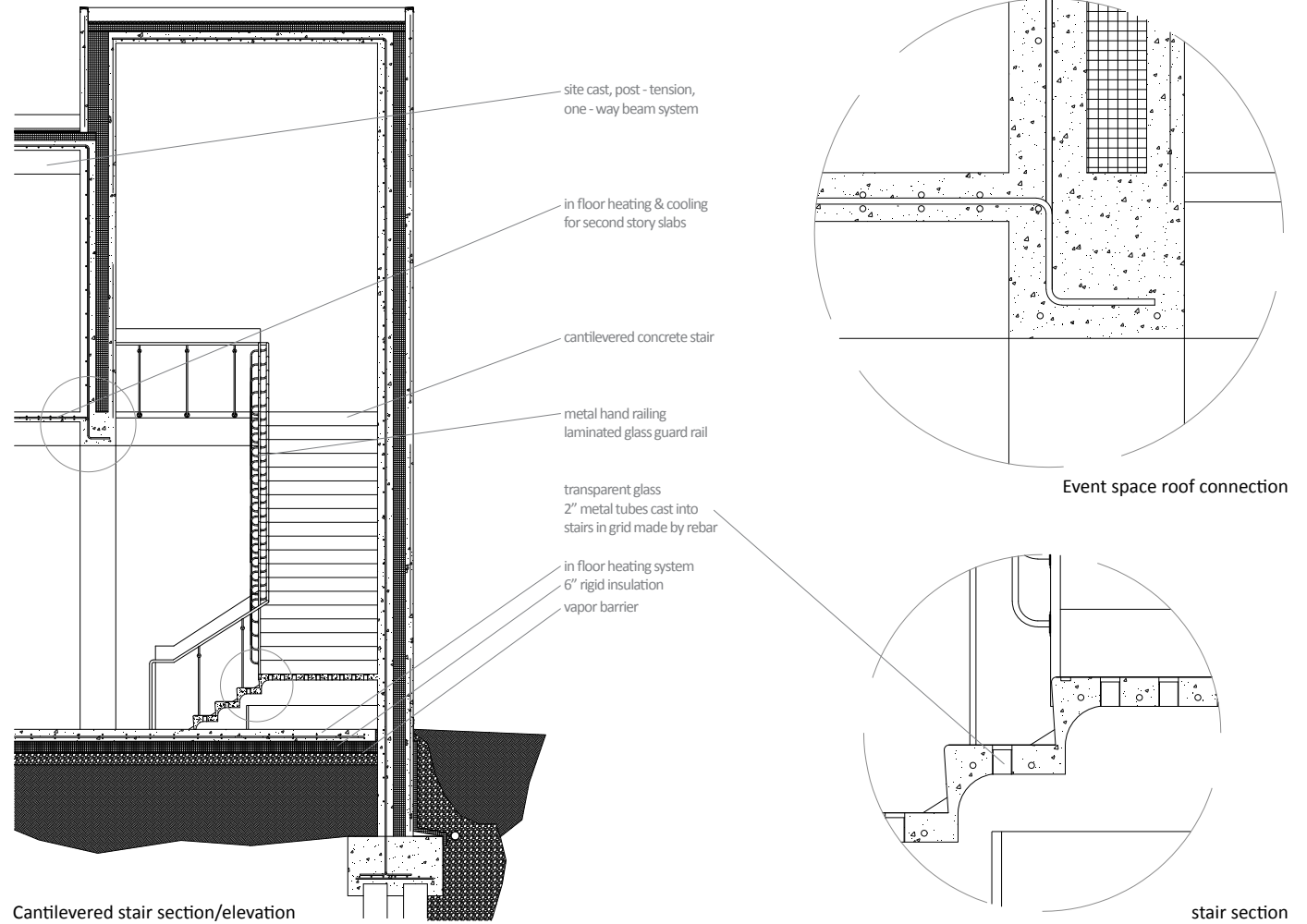
Floor plans from left: basement, ground floor, second floor

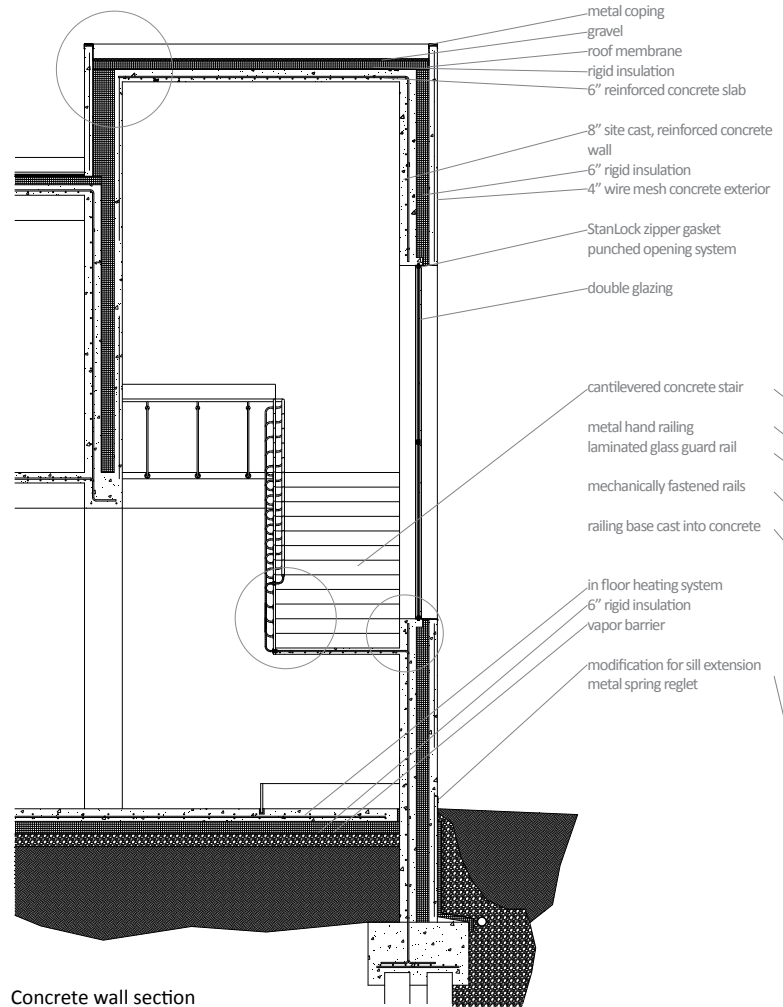
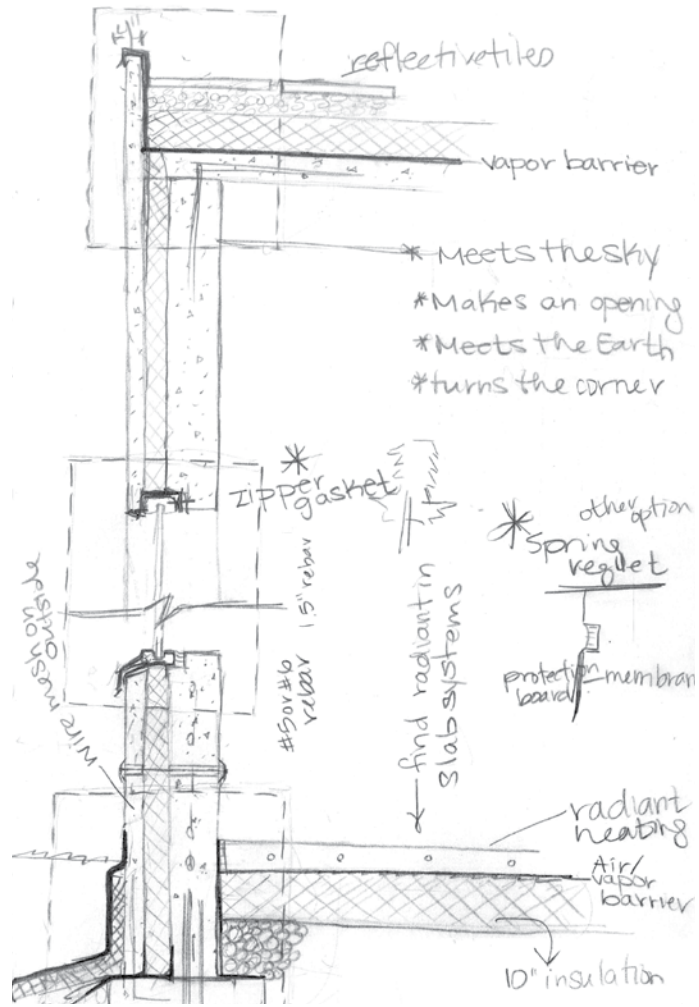
COMPREHENSIVE DESIGN STUDIO 2012

Riparian Wetland Research & Learning Center Proposal

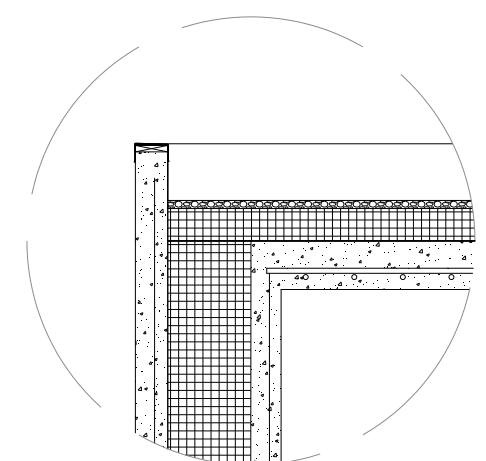
The comprehensive studio gave us the rare opportunity to improve upon the design we had begun in the previous semester's studio. In this six week studio we spent time gaining an understanding of building code, sustainable strategies and systems that could benefit our designs, and finally the detailing of the systems at play in the design.

Through research and precedent study we were able to design details for two wall sections and a stair in our designs, bringing them closer to reality and constructability. Iterating through sketch allowed me to development the details more quickly to the point that they eventually reached in hardline.

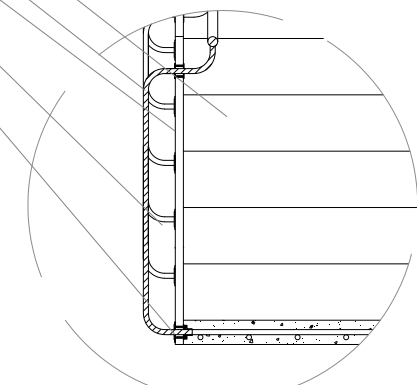




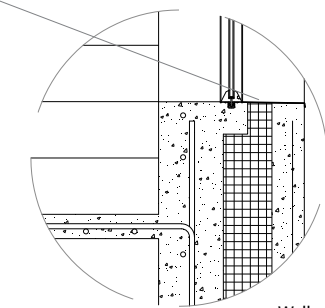
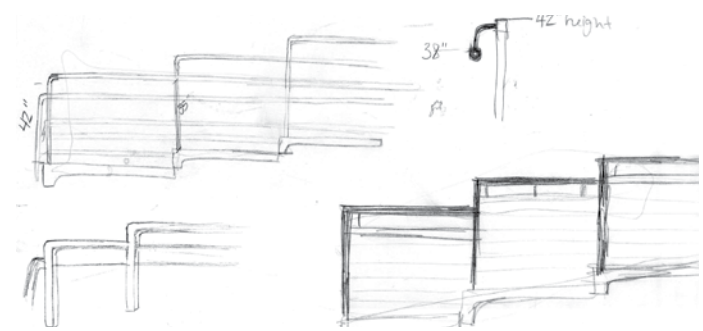
Concrete wall section



Wall section at parapet



Wall section at stair railing connection



Wall section at window sill

EVENT DESIGN

The Wood & The Ivory Wedding

I have included my wedding in this portfolio because this project, more than any other, taught me the reality of the design process from conception of an idea to execution of an unforgettable day. The idea to recreate my grandparents farm for a wedding was born from a whimsical suggestion. Little did everyone know, this suggestion would spark a fire in both my husband's and my mind to create a wedding that represented us in every detail possible.

The summer leading up to our wedding was filled with clean up on the farm that had not seen such attention in 20 years; the reclamation of shipping crates to build tables, benches, bathroom walls, and the dance floor we had designed; brewing all of the beer and wine to be served; collecting pianos headed for the trash; creating the decor; casting a concrete table for the bathroom; practicing for our self-designed ceremony's opening duet; altering my dress and the groomsmen's shirts; making all accessories for the wedding party; and above all being able to share the entire process - as difficult as it was at times - with our loving and supportive family and friends.



